

PARTS LIST



2020.08.26

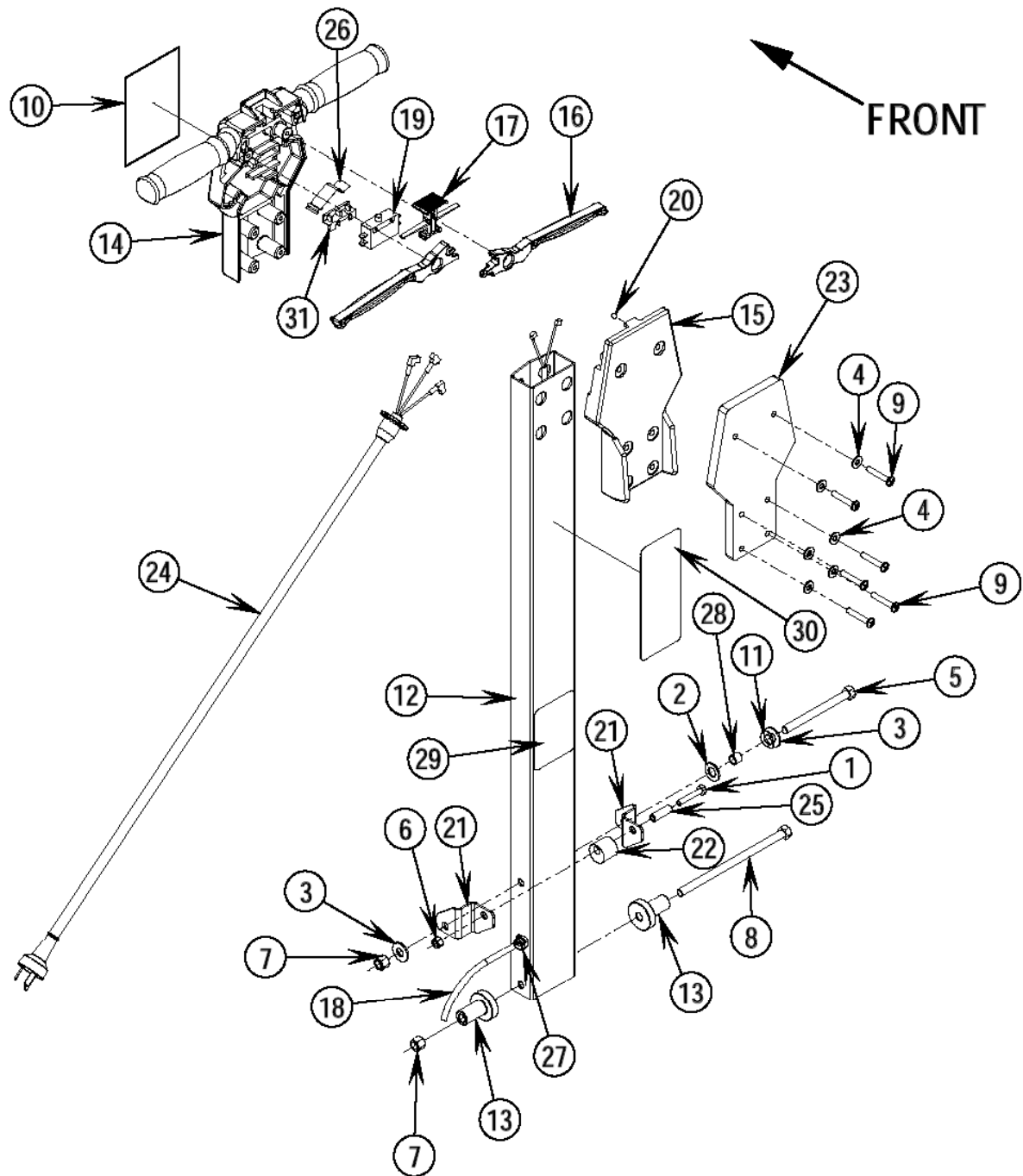
www.nilfisk.com



Ersatzteile unter www.gluesing.net

TABLE OF CONTENTS

HANDLE SYSTEM	1
BASE SYSTEM	3
BASIS SYSTEM - Schaltplan	6



Pos.	Artikel-Nr.	Menge	Variante	Notes
01	56001833	1	SCR HEX HD 1/4-20X1,5	
02	56009003	1	Unterlagsscheibe	
03	56002063	2	"U-Scheibe 3/8""	
04	56002098	6	Scheibe	
05	56009241	1	SCR, HEX 3/8-16x4.25	
06	56002708	1	Stopmutter 1/4-20	
07	56002769	2	Stopmutter 3/8-16	
08	56002777	1	SCR HEX 3/8-16x7.00	
09	56002786	6	Schraube 1/4-20 X 1.5 0	
09	56002108	6	Schraube PAN HD PHIL 1/4-	
10	56016426	1	DECAL LOGO	[1]
11	56009001	1	WASHER, BOWED .515	
12	56201587	1	HANDLE TUBE	
12	56201510	1	HANDLE, TUBE	
13	56201016	2	Durchführungsbolzen (5120	[2]
14	56201560	1	HANDLE	[1]
15	56201058	1	COVER HANDLE	[1]
16	56201027	2	Einschalthebel (SDH5120)	[2]
17	56201031	1	Schalterknopf,rot (5120)	[2]
18	56201574	1	CORD ASSY. 2 X 1.00 SQ MM	[1]
19	56201648	1	Schalter DPDT No	[2]
20	56201592	1	Ball 1/4 SS 302	[2]
21	56201523	2	BRACKET	[2]
22	56201525	1	Befestigung f. Gasdruck-	[2]
23	56201526	1	WEIGHT, HANDLE	
23	56201507	1	Gewicht f. Griff	[2]
24	56201573	1	Netzkabel f.SDH5120	[2]
24	56201718	1	CORD SET, 50'	
25	56201531	1	Hülse f. Gasdruckdämpfer	[2]
26	56263648	1	Feder	[3]
27	56201596	1	Zugentlastung	
28	56388326	1	BUSHING .38x.48x.41	
29	56016064	1	DECAL LATCH	[2]
30	56014828	1	DECAL WARNING PD298P	[2]
31	56201647	1	Abstandshalter	[2]

Part Notes:

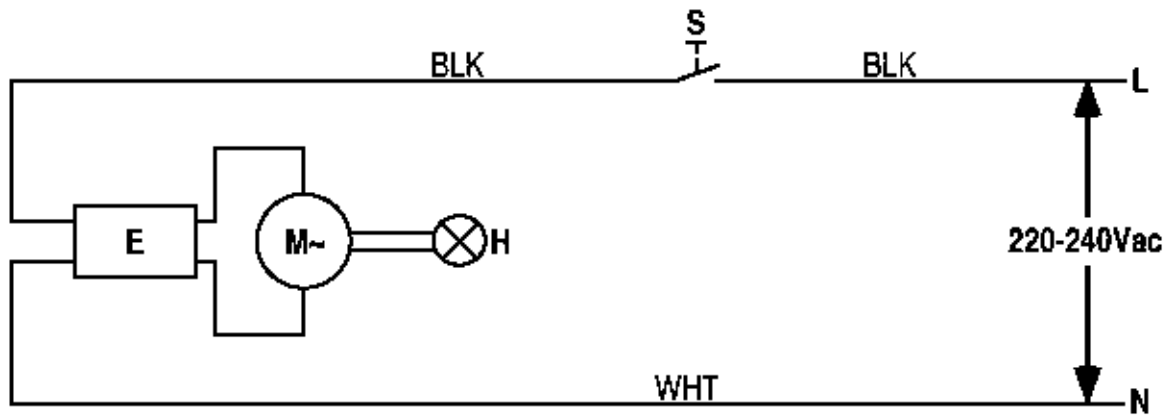
- [1] - EXPIRED ON 12/16/2011
- [2] - GUARANTEE DATE EXPIRED
- [3] - STOCK COVERS GUARANTEE

Pos.	Artikel-Nr.	Menge	Variante	Notes
01	56009191	4	Schraube PAN PHIL 10-14x.	
02	56002271	4	Schraube HEX HD 3/8-16x.8	
03	56003238	1	Keil BR 1300 C	
04	56003264	1	"Benzingring 0,5""	
05	56009001	1	WASHER, BOWED .515	
06	56201585	1	PLATE	[1]
07	56009022	1	Scheibe-U	
08	56001993	2	SCR PAN HD PHIL 10-24X.50	
09	56009057	4	WSHFLTHARD.344x1.000x	
10	56002043	4	Schraube 10-24 x 38	
11	56003039	6	Schraube 1/4-20	
12	56009126	4	Schraube 1/4-20 x75	
13	56015914	1	DECAL BRUSH WEAR INDICATOR	[1]
14	56201089	1	AXLE	[1]
15	56201018	4	Rad f. SDH5120	[1]
16	56201591	1	CUP	[1]
17	56201515	2	PIN	[1]
18	56201516	1	Fußhebel f.SDH5120	[1]
19	56201576	1	GUARD	[1]
20	56201521	2	Buchse	[1]
21	56201522	1	Gasdruckdämpfer f.SDH5120	[1]
22	56201524	1	Befestigung f.Gasdruck-	[1]
23	56201528	1	Schaumstoff-Filter (5120)	[1]
24	56183016	1	Kollektorhalter f. SDH 51	[1]
24	56201581	1	BRUSH BOARD ASSY	[2]
24	56201582	4	Kohlebürste 1 Stk SDH5120	
24	56180163	1	RECTIFIER 40A	[3]
24	56201580	1	ARMATURE ASSY	
24	56201542	1	MOTOR 230V 1800RPM	[1]
24	56378380	1	Kugellager 0.9843	
24	56372773	1	Kugellager zu AX 300	
24	56183580	4	SPRING SET OF 4	[1]
24	56201548	1	END BELL SHAFT END	
25	56201543	1	Gehäuse SDH 5120	[1]
26	56201595	1	VAC BAG SHROUD	[2]
27	56201554	1	Motorabdeckung SDH 5120	[1]
28	56016473	1	Abdeckung	[1]
29	56201593	1	Motordeckel	[1]
30	54195A	1	Staubbeutel, VPE 10	
31	56201090	2	PIN AXLE	[1]
32	56201562	1	PIN	[1]
33	56201563	1	COVER CORD	[1]
34	56201564	2	PANEL FASTENER	[1]
35	56201572	1	Gummiring f.SDH5120	[1]
36	56393565	1	Gummischutz	
37	56201571	1	Dust Shroud Assy.	[1]
37	56201617	1	Dichtung	[4]
38	56755578	1	Schütz	[5]
39	56201534	1	Padhalter	[6]
40	56002956	1	Schraube HEX LOC 5/16-18	
41	56481890	1	CLAMP_CABLE .250 E00129	
42	56002035	3	002721X HD 5/16-18X.62	
43	56009082	2	SCR PANPHILT HD FORMBLD10	
44	56002832	2	6-Kt Mutter Nylon	
45	56201557	1	Filter, RFI 10A.120/250V	[2]
46	56002145	1	Schraube 1/4 20x .50	
47	56201556	1	BRACKET	
48	56201579	1	Cover, Hub (f.5120)	[1]
49	56393567	1	Padhaltering kpl., grau, 115 mm	

Pos.	Artikel-Nr.	Menge	Variante	Notes
51	56505551	1	BRUSH, BURNISHING	
51	82308900	1	PAD 20 505MM BEIGE 5PCS	[7]
51	56009002	6	UNTERLEGSSCHEIBE, FLACH	
51	56505550	1	BRUSH BURNISHING	[8]
52	56201533	1	GUARD	[1]
53	56478246	2	CABLE TIE E00549 RE438BA	

Part Notes:

- [1] - GUARANTEE DATE EXPIRED
- [2] - EXPIRED ON 12/16/2011
- [3] - EXPIRED USE 56265103
- [4] - NO LONGER AVAILABLE
- [5] - STOCK COVERS GUARANTEE
- [6] - PRUNED ACCESSORY
- [7] - NO LONGER AVAILABLE FOR SALE
- [8] - EXPIRED 3/21/2006



Resource notes:

Pos.	Artikel-Nr.	Menge	Variante	Notes
0E	56201557	1	Filter, RFI 10A.120/250V	[1]
0H	56755578	1	Schütz	[2]
0M	56201542	1	MOTOR 230V 1800RPM	[3]
0S	56201649	1	Schalter Kit f. SDH 5120	[3]

Part Notes:

- [1] - EXPIRED ON 12/16/2011
- [2] - STOCK COVERS GUARANTEE
- [3] - GUARANTEE DATE EXPIRED

